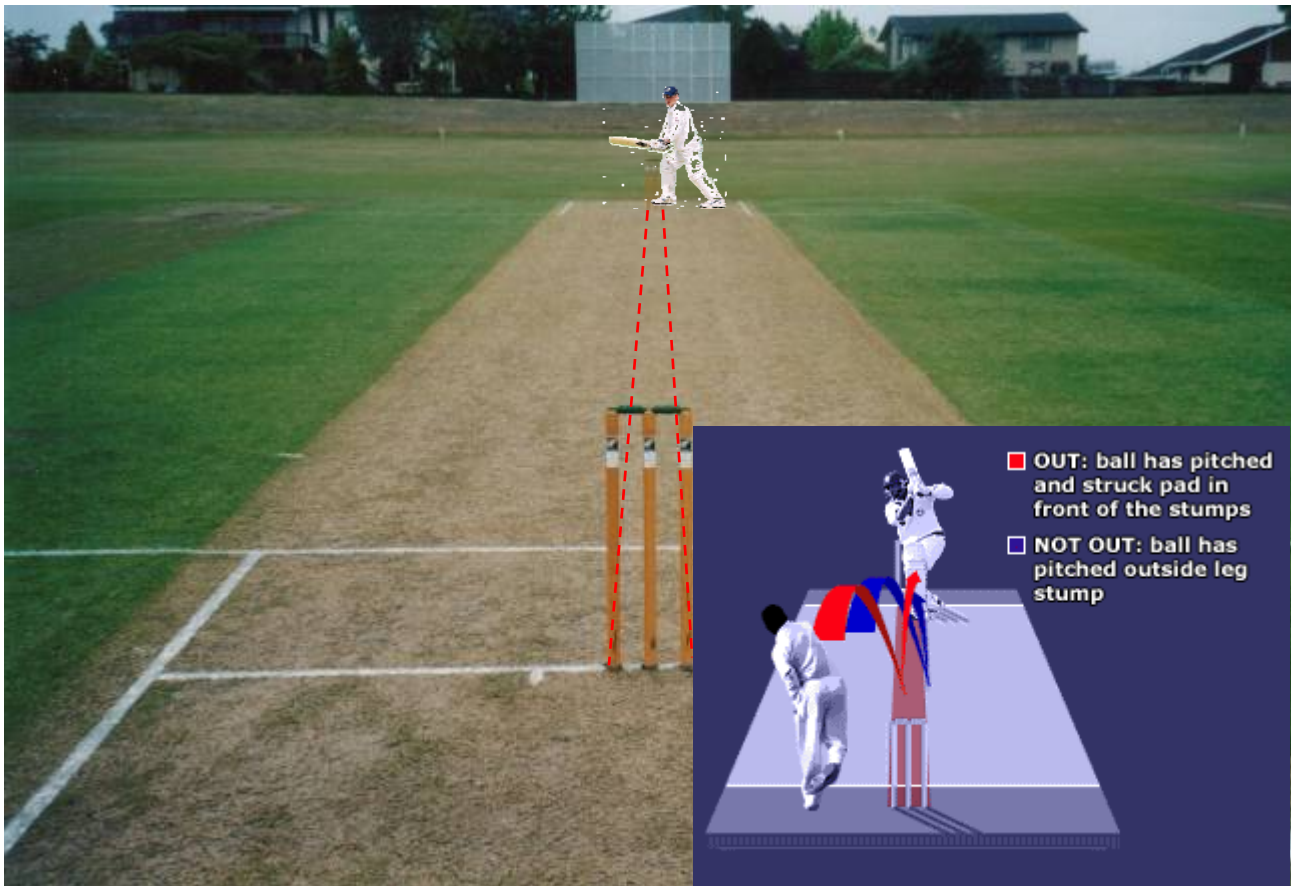


# Law 36 - Leg Before Wicket

Shown here for a Right-handed striker - Mirror for a Left-handed striker



4 questions the umpire must answer **YES ...**

1. Did the ball pitch between wicket & wicket **in the Red zone** or on the off-side? ..... **YES**
2. Was the first point of interception the striker person or equipment and not his bat? ... **YES**
3. Was the first point of interception between wicket & wicket **in the Red zone**? ..... **YES**
4. But for that interception, would the ball have hit the wicket? ..... **YES**

**Out L B W**

An intercepted full-toss ...

1. The umpire must accept that the ball would follow that trajectory and would not deviate

The striker not playing a legitimate stroke ... (the umpire's opinion)

3. The first point of interception can be on the off-side

If the answer to any of the above is **NO** ..... **NOT-OUT**